



CFM

Conservation Federation

MISSOURI

Logo



Seal





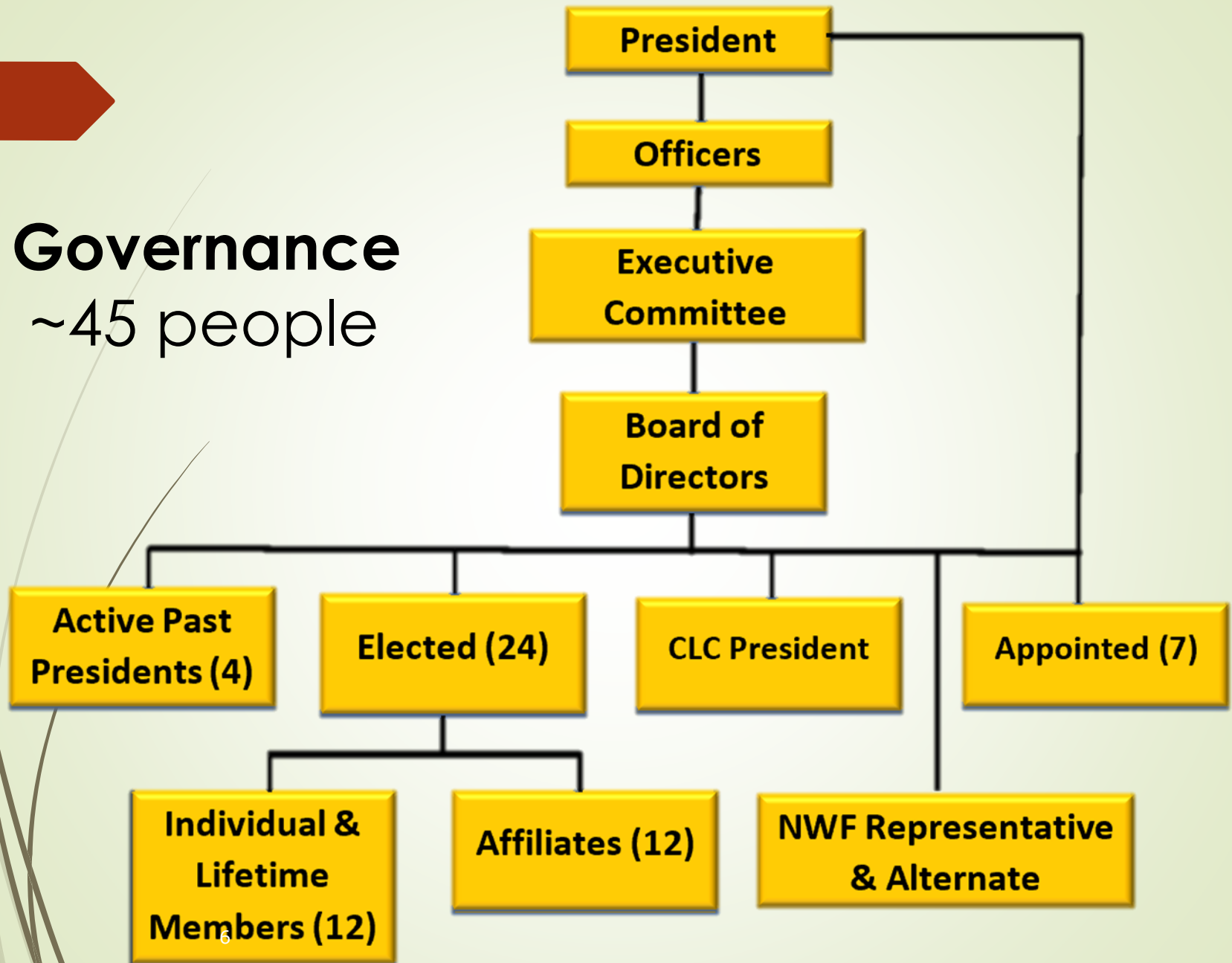
CFM is an **Affiliate** of the National Wildlife Federation, made up of individual, life and affiliate **Members**, supported by **Business Partners**, governed by **Elected Officers and Board**, with standing, ad hoc and resource **Committees**, operated by a **Staff** of 5, all to implement and support the CFM **Mission**



To ensure conservation of Missouri's wildlife and natural resources, and preservation of our state's rich outdoor heritage through **advocacy, education and partnerships.**

Governance

~45 people



Officers



Zach Morris
President



Bill Kirgan
President Elect



Ginny Wallace
Vice President



Bill Lockwood
Treasurer

Lisa Allen
Secretary



Staff



Tyler Schwartze
Executive Director



Micaela Haymaker
Director of Operations



Michelle Gabelsberger
Membership Manager



Nick Darling
Education & Communication
Coordinator



Joan VanderFeltz
Admin. Asst.



Did we get here?

10 Early explorers describe lush forests and abundant wildlife

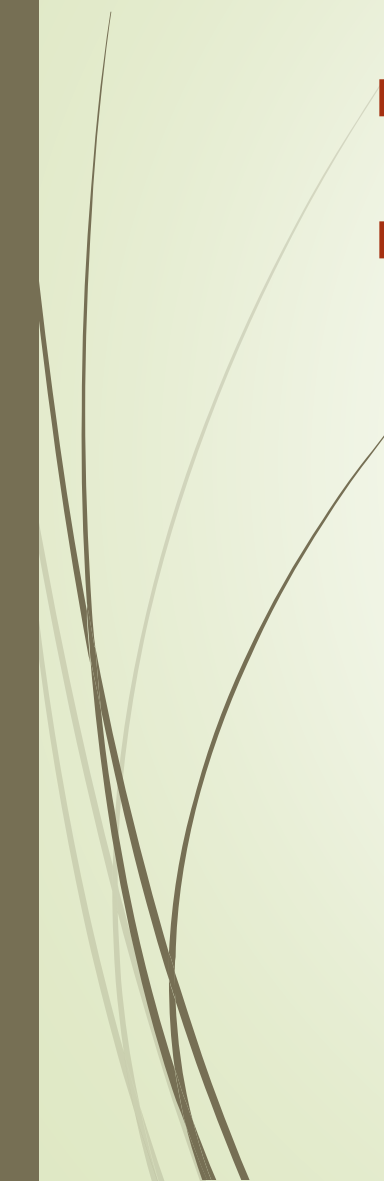
“We had not travelled far when we discovered, in a ravine below, four bears upon trees.”

“the waters of this stream are very clear and pure, and ducks are common upon it. The wild turkey and squirrel are also seen on its banks.”

“the land they had passed through as the best they had ever seen, and the timber good, consisting chiefly of oak, ash, hickory, and black walnut. They had killed in their way five deer.”



By 1920s

- Deer Population – 2,000
 - Once a leading timber-producing state, by 1920 no more trees are left to cut in the Ozarks.
- 

Citizens reacted

A few early organizations

- Missouri Birding Society – 1901
- Missouri Ducks Unlimited State Council – 1911
- St. Louis Audubon Society – 1915
- Burroughs Audubon Society – 1919
- Missouri Society of American Foresters – 1929
- **CONSERVATION FEDERATION OF MISSOURI - 1935**

In 1935, sportsmen from throughout Missouri came together to form the

CONSERVATION
FEDERATION OF
MISSOURI (CFM).

They organized with the purpose of taking conservation out of politics.






BRING 'EM BACK TO MISSOURI

Their initiative petition campaign resulted in the creation of the Missouri Department of Conservation, a non-political conservation agency that has been a model for other states.

NO TAXES

VOTE YES SCRATCH ~~NO~~ PROPOSITION No. 4

A topographic map of the state of Missouri is shown, with a semi-transparent grey rectangular box overlaid in the center. The map uses a color gradient from light tan to dark green to represent elevation. The word "MISSOURI" is printed in the upper right corner of the map. The text "CFM created the first apolitical, science-based conservation agency in the world!" is centered within the grey box.

CFM created the first
apolitical, science-based
conservation agency
in the world!

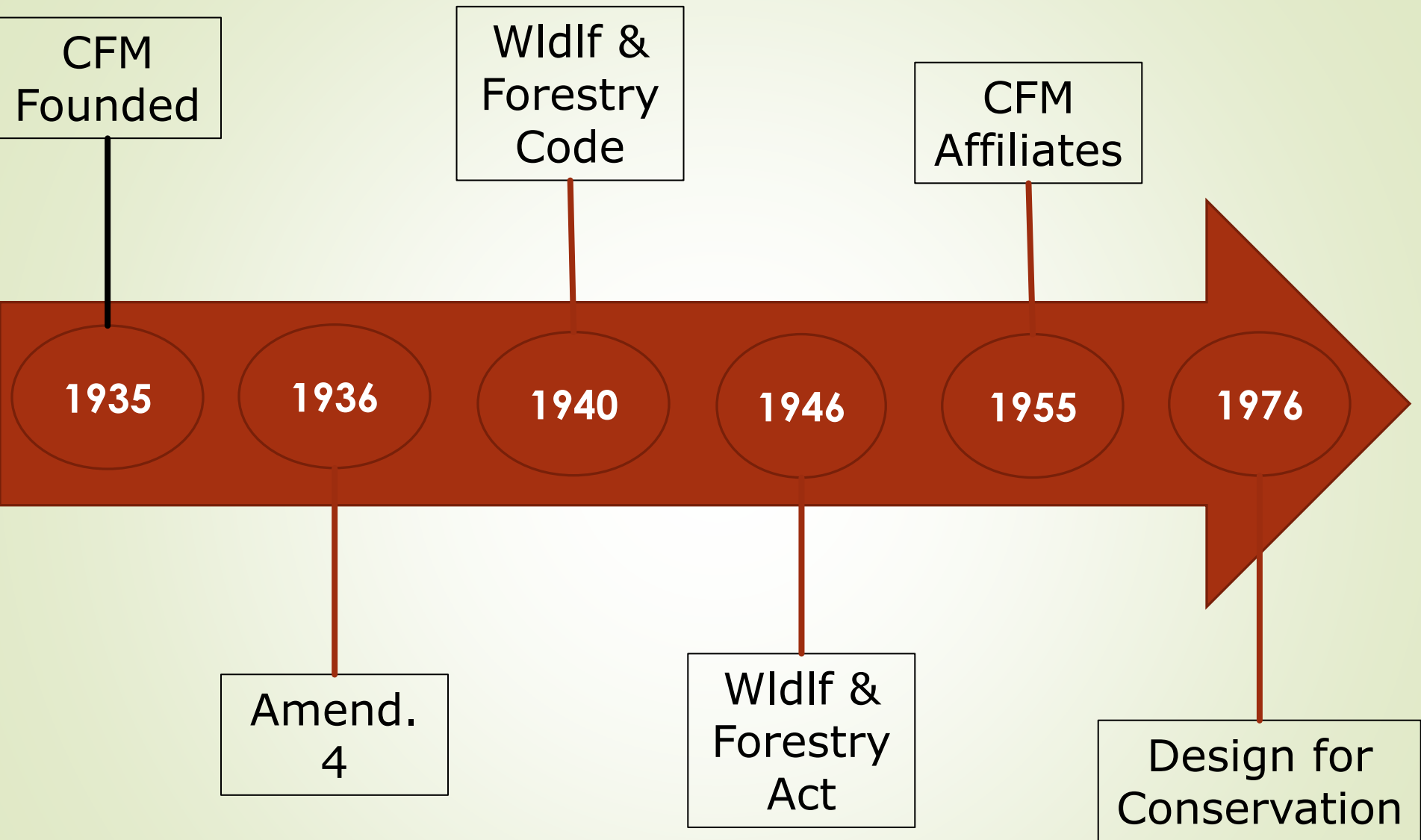


1976

CFM spearheaded successful passage of the conservation sales tax to create stable broad based funding for Missouri's forests, fauna and fish.

1984

Parks and Soils Sales Tax





1955 – First Affiliates

- Tipton Farmers & Sportsman's Club
 - Northside Conservation Federation
 - Festus-Crystal City Conservation Club
 - South Side Division CFM
- 



1956

- Ozark Wilderness Waterways Club
 - Missouri Trout Fisherman's Association
- 



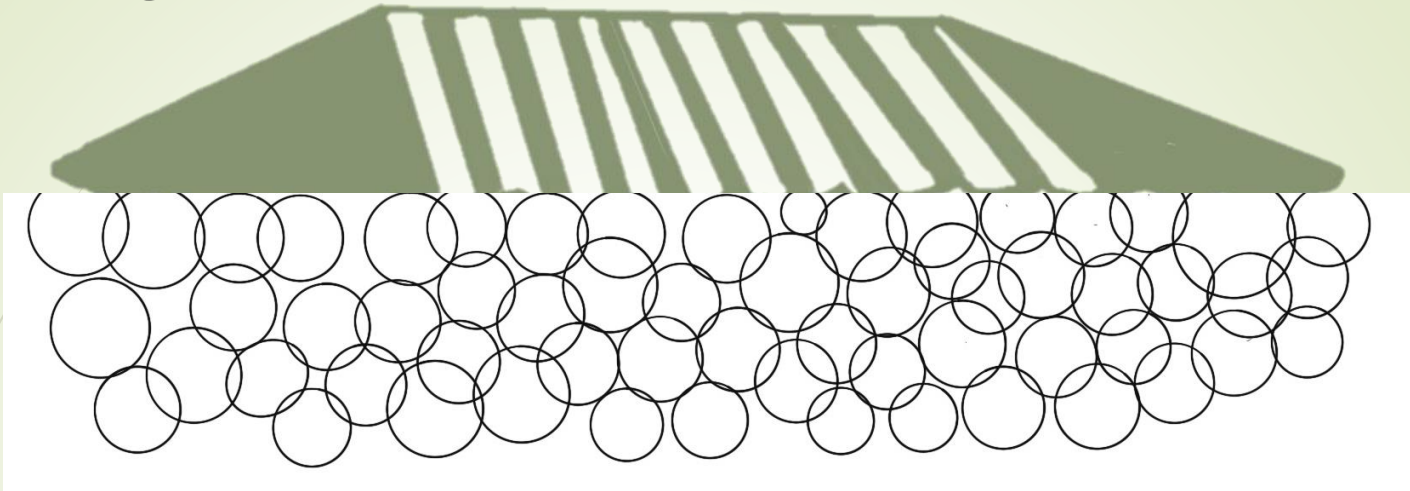
1960s

- Missouri Park & Recreation Association
- Anglers of Missouri
- Missouri Bowhunters Association
- Big Game Hunters
- Missouri State Campers Association

And so on



A Big Tent



Professional Associations
Hunting and Fishing Clubs
Resource Management
NGOs
Nature Enthusiasts
Bird Conservation
Youth Education
Outdoor Recreation

Environmental
Land trusts
Forestry
Outdoor Communicators
Caves and Karst
Rivers and Streams
Wildlife Rehabilitation
More



To ensure conservation of Missouri's wildlife and natural resources, and preservation of our state's rich outdoor heritage through advocacy, education and partnerships.



Advocacy

- Legislative Action Center
- Legislative Policy Committee
- Conservation Day at the Capitol
- Natural Resource Advisory Committees
- Resolutions

**CFM resolutions are one of the most
powerful expressions of our opinion
as a conservation organization**

Education

- 
- Conservation Leadership Corps – CLC
 - Missouri Conservation Collegiate Alliance – MCCA
 - Youth Conservation Action Committee
 - Scholarships
 - Governor's Youth Turkey Hunt
 - Annual Convention
 - Conservation Day at the Capitol
 - Affiliate Summit
 - *Conservation Federation Magazine*

Partnerships

- > 100 affiliated organizations
- Share the Harvest
- Corporate & Business Partnerships
- National Wildlife Federation Affiliate
- Operation Game Thief
- Operation Forest Arson
- David A. Risberg Memorial Grants
- State & Federal Agency Partnerships



Do We Execute Our Mission?

REGULAR COMMITTEES

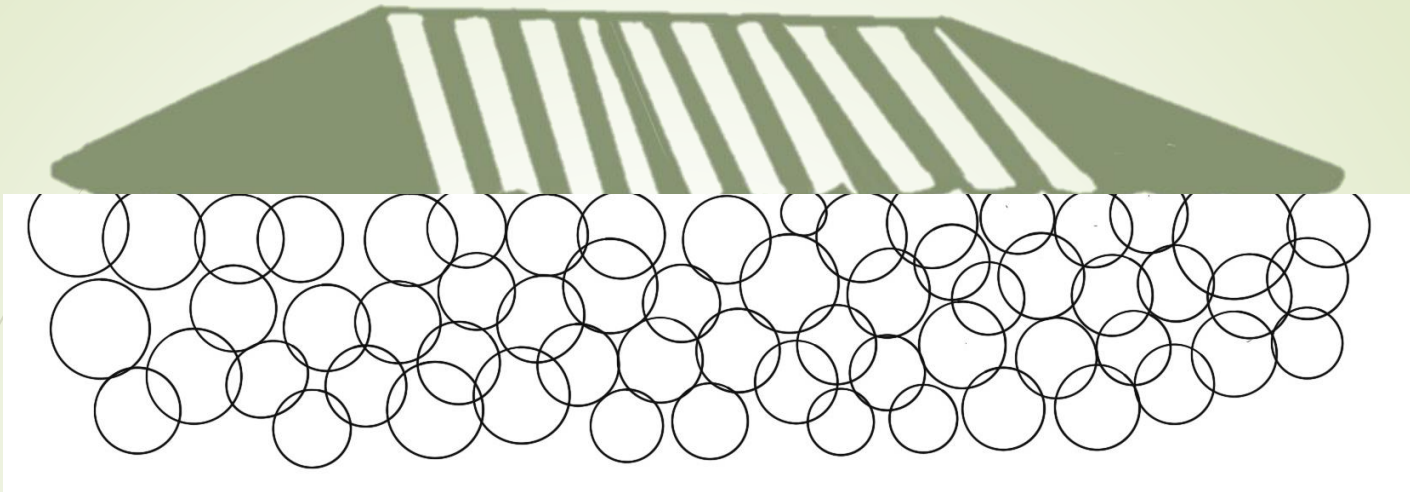
- Executive
- Ways And Means
- Budget And Finance
- Strategic Planning
- E. Sydney Stephens
- Membership
- Marketing
- Nominating
- Constitution and Bylaws
- Awards
- Oaks
- Convention
- Scholarship
- Share The Harvest
- Sporting Clay Shoot
- (CLC) Alumni
- Legislative Policy
- Youth Conservation Action

Resource Advisory Committees



- Archery and Shooting Sports
- Big Game, Turkey, and Furbearers
- Education and Outdoor Recreation
- Environment and Ecology
- Forest Resources and Management
- Grassland and Prairies
- Public/Private Lands
- Rivers, Streams, and Fisheries
- Upland Wildlife
- Wetlands and Waterfowl

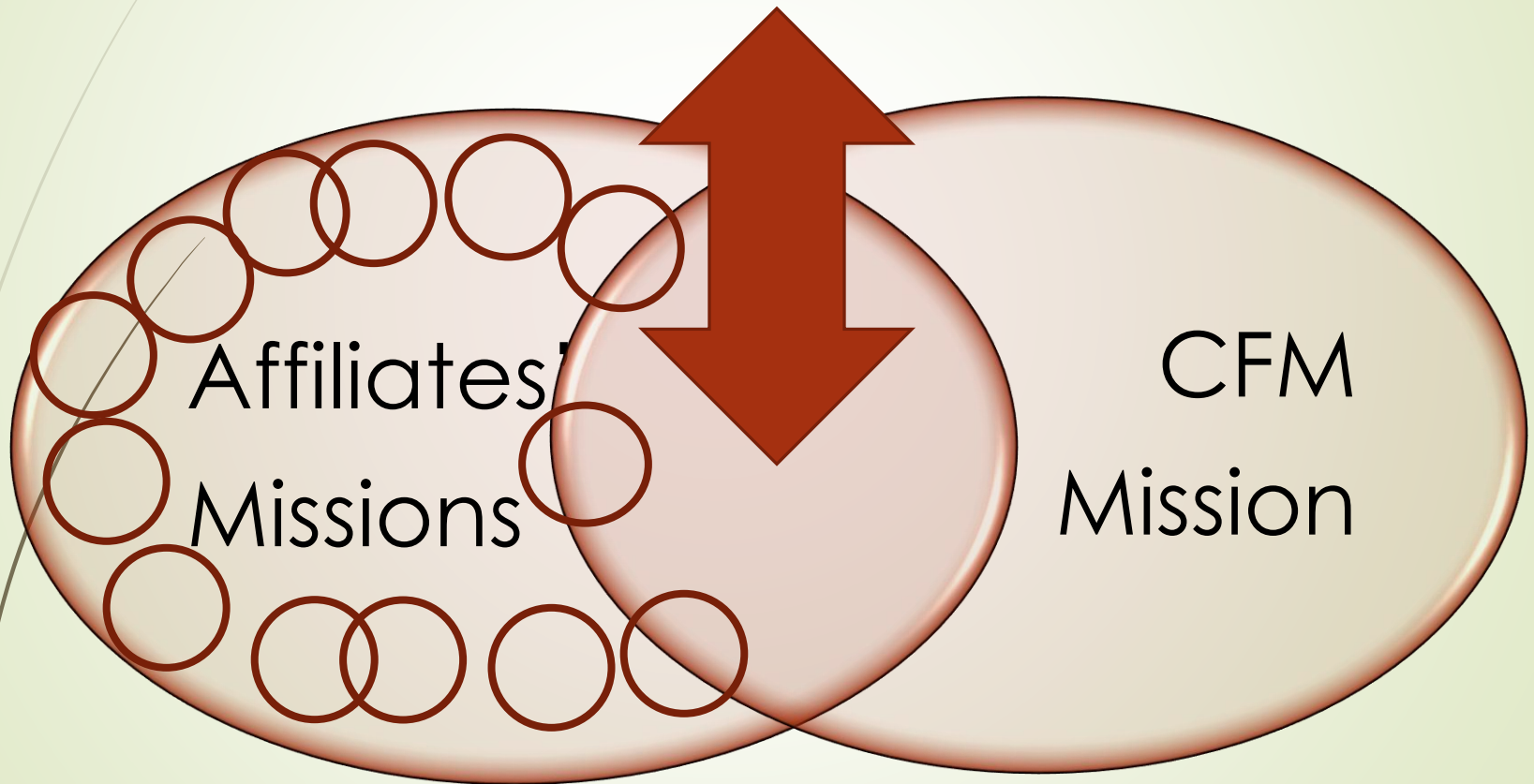
Affiliates



Professional Associations
Hunting and Fishing Clubs
Resource Management
NGOs
Nature Enthusiasts
Bird Conservation
Youth Education
Outdoor Recreation

Environmental
Land trusts
Forestry
Outdoor Communicators
Caves and Karst
Rivers and Streams
Wildlife Rehabilitation
More

Ensure conservation of
Missouri's wildlife and
natural resources



Keep our "eyes on the prize"

What can you do?

- Encourage your members to join CFM
- Run for a board position
- Share your knowledge & expertise
- Serve on Resource Advisory Committees
- Help set policy through Resolutions
- Keep your information Current!
 - Annual Affiliate Application
 - Share your membership list (if you can)
- Keep doing what you do



Questions?